

PARMA[®]

Forage Trailer **OWNER'S MANUAL/PARTS BOOK**

Manual Number 04092013-TRLR

PARMA
COMPANY

P.O. BOX 190

PARMA, IDAHO 83660

PHONE (208) 722-5116 FAX (208) 722-6012

E-Mail: www.parmacompany.com

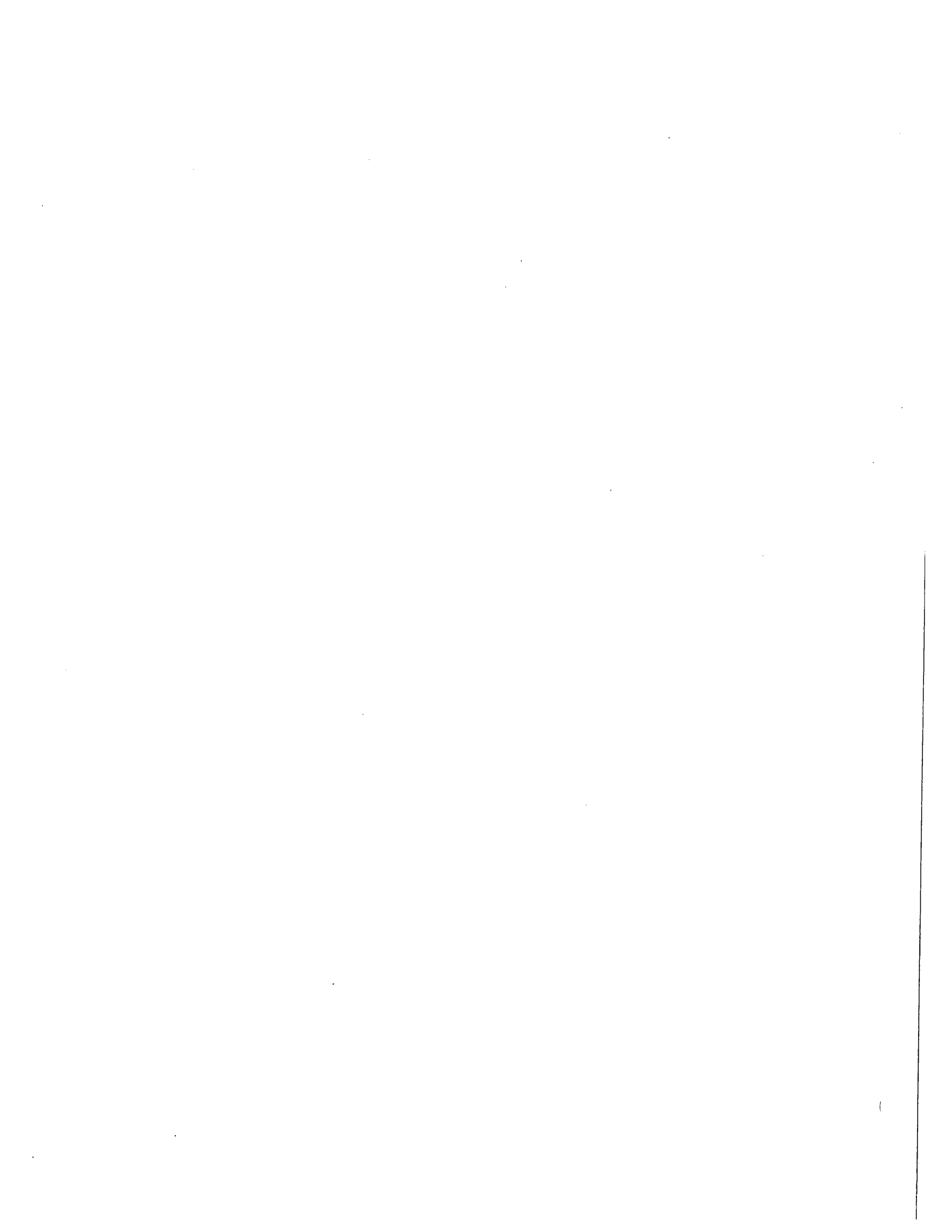


TABLE OF CONTENTS

BOLT TORQUE.....	15
CUSTOMER & DEALER CHECKLIST	1
INTRODUCTION.....	1
LUBRICATION & SERVICE SCHEDULE	13
MAINTENANCE & SERVICE INFORMATION.....	12
PARTS REPLACEMENT SECTION.....	17
SAFETY PRECAUTIONS	4
SAFETY SIGN LOCATIONS.....	6
SAFETY BEFORE OPERATING.....	8
SAFETY DURING OPERATION.....	8
SAFETY DURING HIGHWAY AND TRANSPORT OPERATIONS.....	10
SAFETY WHILE PERFORMING MAINTENANCE.....	11
STARTUP PROCEDURE.....	16
TROUBLE SHOOTING	14
WARRANTY POLICY.....	3



INTRODUCTION

This manual has been prepared to acquaint you with the operation and maintenance of your **PARMA Forage Trailer**, and to provide important safety information. We urge you to read this manual carefully. The recommendations will help assure the safe and trouble free operation of your machine.

When it comes to service, keep in mind that your dealer knows your Forage Trailer well and is interested in your complete satisfaction. Your dealer invites you to call him for your service needs both during and after the warranty period.

We thank you for choosing a PARMA product and want to assure you of our continuing interest in your satisfaction. You have purchased a very good machine and with proper care it will give you good service.

CUSTOMER AND DEALER CHECKLIST

After the machine has been completely assembled, inspect it thoroughly to be certain it is in operating condition before delivering it to a customer. The following checklist is a reminder of points to inspect. Check off each item as it is found satisfactory or after proper adjustment is made.

PRE-DELIVERY:

- Check all bolts and nuts to be sure they are tight.
- Make sure all bearing lock collars are set correctly and tightened.
- Inspect and, if necessary, grease at all lubrication points; making sure all bearings are taking grease.
- Check all moving parts for smooth operation.
- Check to see that all hydraulic fittings and cylinders are tight and free of leaks.

DELIVERY:

- Complete the Delivery and Warranty Registration Forms, listing serial number of machine.
- Have the dealer and customer sign the form. Explain warranty policy on the Warranty Registration Form, and return to Parma Company.
- Show the customer how to operate the Forage Trailer.
- Explain adjustments.
- Explain the importance of proper lubrication.

___ Give the operator's manual to the customer and ask him to familiarize himself with all sections of it.

DELIVERY CHECKLIST continued:

BEFORE EACH SEASON:

___ Check all adjustable components for correct setting.

___ Perform complete lubrication of machine.

___ With equipment operating, observe operation of moving parts. Watch for faulty operation, overheated bearings, and unusual sounds.

___ Read the safety precautions.

___ Read the operating instructions.

___ Perform daily checklist.

DAILY CHECKLIST:

___ Lubricate (as instructed) all lubrication points (see pg.13).

WARRANTY POLICY

PARMA COMPANY warrants to each purchaser from an authorized dealer of new equipment manufactured by PARMA COMPANY, that such equipment is, at the time of delivery to such purchaser, free from defects in material and workmanship under normal use, if serviced in accordance with the recommendations of the Operator's Manual. All PARMA COMPANY'S *harvesting equipment products* are warranted for 120 days from the first day of use or 800 acres, whichever occurs first. All PARMA COMPANY *soil preparation* products are warranted for 120 days from first day of use or 1600 acres, whichever occurs first. All PARMA COMPANY *water and waste pump products* are warranted for one year from date of purchase. ALL PARMA COMPANY *forage products* are warranted for one year from date of purchase. Warranty on defective parts purchased by PARMA COMPANY or produced by other manufacturers for PARMA COMPANY may be allowed only after the approval of the vendor or manufacturer.

PARMA COMPANY'S obligation under this warranty is limited to repairing, or at it's option, replacing any part, that in PARMA COMPANY'S judgment, proved defective. Under the terms of the warranty, PARMA COMPANY assumes no responsibility for labor or travel costs involved in removal of defective parts, of installation of new parts, or of any shop supplies or service charges.

All warranty claims are to be initiated through the authorized PARMA COMPANY dealer and must be submitted within 30 days of the date of failure. PARMA COMPANY may ask for defective parts to be returned to the factory; therefore, hold all warranty claim parts until advised if the parts are needed by your dealer.

To make the warranty effective, the owner's Warranty Registration Form must be on file at PARMA COMPANY, Parma, Idaho at the time of receipt of the warranty claim.

DISCLAIMER OF ALL OTHER WARRANTIES AND CONSEQUENTIAL DAMAGES

THE FOREGOING IS IN LIEU OF ALL OTHER WARRANTIES, WHETHER EXPRESSED OR IMPLIED, INCLUDING ANY IMPLIED WARRANTY OF MERCHANTABILITY OR FITNESS FOR A PARTICULAR PURPOSE, AND THERE ARE NO WARRANTIES, WHICH EXTEND BEYOND THE DESCRIPTION OF THE PRODUCTS. THE LIABILITY OF PARMA COMPANY IS EXPRESSLY LIMITED TO REPAIRING, OR AT ITS OPTION, REPLACING ANY PART THAT IS RETURNED, TRANSPORTATION PREPAID, TO PARMA COMPANY, PARMA, IDAHO, THAT IN PARMA'S JUDGEMENT PROVED DEFECTIVE DURING THE WARRANTY PERIOD. NO REPRESENTATIVE OF PARMA COMPANY, NO DEALER OR DEALER'S

REPRESENTATIVE OR ANY OTHER PERSON HAS AUTHORITY TO WAIVE, ALTER, VARY OR ADD TO THE TERMS HEREOF WITHOUT PRIOR APPROVAL IN WRITING SIGNED BY AN OFFICER OF PARMA COMPANY. PARMA COMPANY WILL NOT BE LIABLE FOR ANY OTHER EXPENSE, INJURY, LOSS OR DAMAGE WHETHER DIRECT OR CONSEQUENTIAL, ARISING IN CONNECTION WITH THE SALE OR USE OF OR INABILITY TO USE, ANY PRODUCT OF THE COMPANY FOR ANY PURPOSE.

SAFETY PRECAUTIONS

TAKE NOTE! THIS SAFETY ALERT SYMBOL FOUND THROUGHOUT THIS MANUAL IS USED TO CALL YOUR ATTENTION TO INSTRUCTIONS INVOLVING YOUR PERSONAL SAFETY AND THE SAFETY OF OTHERS. FAILURE TO FOLLOW THESE INSTRUCTIONS CAN RESULT IN INJURY OR DEATH.



THIS SYMBOL MEANS

-ATTENTION!

-BECOME ALERT!

- YOUR SAFETY IS INVOLVED!

SIGNAL WORDS:

Note the use of the signal words DANGER, WARNING and CAUTION with the safety messages. The appropriate signal word for each has been selected using the following guidelines:

DANGER: Indicates an imminently hazardous situation that, if not avoided, will result in death or serious injury. This signal word is to be limited to the most extreme situations typically for machine components for which functional purposes cannot be guarded.

WARNING: Indicates a potentially hazardous situation that, if not avoided, could result in death or serious injury, and includes hazards that are exposed when guards are removed. It may also be used to alert against unsafe practices.

CAUTION: Indicates a potentially hazardous situation that, if not avoided, may result in minor or moderate injury. It may also be used to alert against unsafe practices.

If you have questions not answered in this manual or require additional copies or the manual is damaged, please contact your dealer.

SAFETY.... YOU CAN LIVE WITH IT



SAFETY.... YOU CAN LIVE WITH IT



EQUIPMENT SAFETY GUIDELINES

Safety of the operator is one of the main concerns in designing and developing a new piece of equipment. Designers and manufacturers build in as many safety features as possible. However, every year many accidents occur which could have been avoided by a few seconds of thought and a more careful approach to handling equipment. You, the operator, can avoid many accidents by observing the following precautions in this section. To avoid personal injury, study the following precautions and insist those working with you, or for you, follow them.

In order to provide maximum safety to the operator or other persons around this machine, various shields and covers have been installed. Keep all shields and covers in place. If shield removal becomes necessary for repairs or any other reason, replace the shield prior to use.

Replace any CAUTION, WARNING, DANGER or instruction safety decal that is not readable or is missing. Location of such decals is indicated in this manual.

Do not attempt to operate this equipment under the influence of drugs or alcohol.

Review the safety instructions with all users annually.

This equipment is dangerous to children and persons unfamiliar with its operation. The operator should be a responsible adult familiar with farm machinery and trained in this equipment's operations. **Do not allow persons to operate or assemble this unit until they have read this manual and have developed a thorough understanding of the safety precautions and of how it works.**

Do not paint over, remove or deface any safety signs or warning decals on your equipment. Observe all safety signs and practice the instructions on them.

Never exceed the limits of a piece of machinery. If its ability to do a job, or to do so safely is in question – **DON'T TRY IT.**



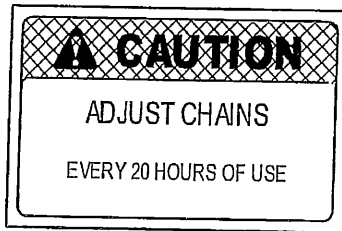
LIGHTING AND MARKING

It is the responsibility of the customer to know the lighting and marking requirements of the local highway authorities and to install and maintain the equipment to provide compliance with the regulations. Add extra lights when transporting at night or during periods of limited visibility.

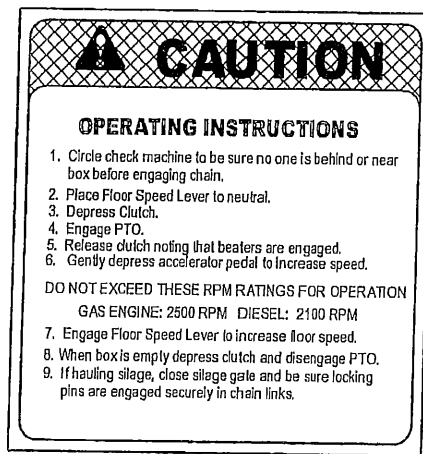
Lighting kits are available from your dealer or from the manufacturer.

SAFETY SIGN LOCATIONS

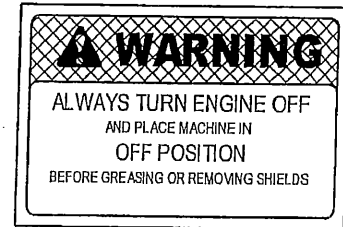
The types of Safety Sign on the equipment are shown below. Their locations are shown on page 13 of the parts section of this manual. Good safety requires that you familiarize yourself with the various Safety Signs, the type of warning and the area, or particular function related to that area that requires your SAFETY AWARENESS.



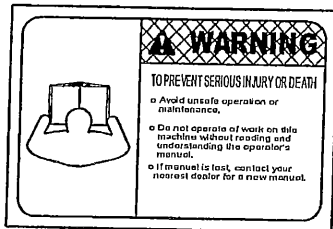
Part #700489



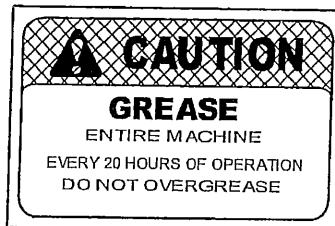
Part #700490



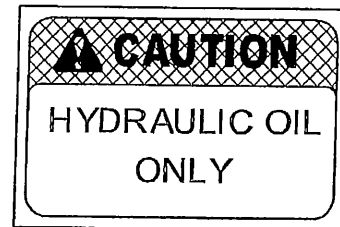
Part #700500



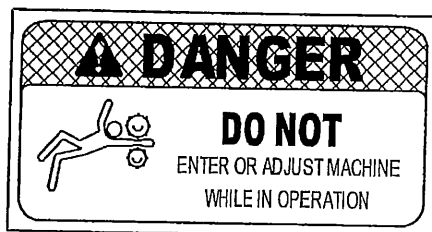
Part #700503



Part #700491



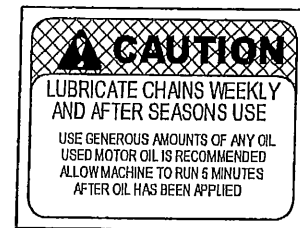
Part #700488



Part #700493



Part #700502



Part #700492

REMEMBER: if Safety Signs have been damaged, removed, become illegible or parts replaced without decals, new decals must be applied. New decals are available from your authorized dealer or manufacturer.



SAFETY SIGN CARE

- Keep safety signs clean and legible at all times
- Replace safety signs that are missing or have become illegible
- Replaced parts that displayed a safety sign should also display the current sign
- Safety signs are available from your Dealer Parts Department or the Manufacturer

How to Install Safety Signs:

- Be sure that the installation area is clean and dry
- Decide on the exact position before you remove the backing paper
- Remove the smallest portion of the split backing paper
- Align the decal over the specified area and carefully press the small portion with the exposed sticky backing in place
- Slowly peel back the remaining paper and carefully smooth the remaining portion of the decal in place
- Small air pockets can be pierced with a pin and smoothed out using the piece of decal backing paper



TIRE SAFETY

- Failure to follow proper procedures when mounting a tire on a wheel or rim can produce an explosion which may result in serious injury or death
- Do not attempt to mount a tire unless you have the proper equipment and experience to do the job
- Inflating or servicing tires can be dangerous. Whenever possible, trained personnel should be called to service and/or mount tires
- Always order and install tires and wheels with appropriate capacity to meet or exceed the anticipated weight to be placed on the equipment.



REMEMBER!

Your best assurance against accidents is a careful and responsible operator. If there is any portion of this manual or function you do not understand, contact your local authorized dealer or the manufacturer.



BEFORE OPERATING:

- Carefully study and understand this manual
- Do not wear loose-fitting clothing which may catch in moving parts
- Always wear protective clothing and substantial shoes
- It is recommended that suitable protective hearing and (eye protection) sight protectors be worn
- The operator may come in contact with certain materials which may require specific safety equipment, relative to the handling of such materials (examples: extreme dust, molds, fungus, bulk fertilizers, etc)
- Keep wheel lug nuts or bolts tightened to specified torque
- Assure that agricultural implement tires are inflated evenly
- Inspect the unit for any loose bolts, worn parts or cracked welds, and make necessary repairs. Follow the maintenance safety instructions included in this manual
- Be sure that there are no tools lying on or in the equipment
- Do not use the unit until you are sure that the area is clear, especially children and animals
- Because it is possible that this equipment may be used in dry areas or in the presence of combustibles, special precautions should be taken to prevent fires and fire fighting equipment should be readily available
- Don't hurry the learning process or take the unit for granted. Ease into it and become familiar with you new equipment
- Practice operation of your equipment and its attachments. Completely familiarize yourself and other operators with its operation before using
- Make sure that the brakes are evenly adjusted (if equipped with brakes)



DURING OPERATION:

- **NO PASSENGERS ALLOWED** – Do not allow any passengers to ride on the equipment at any time unless they are located inside the truck cab with their seat belt fastened
- Keep hands and clothing clear of moving parts

- Do not clean, lubricate or adjust your equipment while it is in motion
- When halting operation, even periodically, set the truck, or towing vehicle brakes, disengage the PTO, shut off the engine and **remove the ignition key**



DURING OPERATION cont....

- Be especially observant of the operating area and terrain – watch for holes, rocks or other hidden hazards. Always inspect the area prior to operation
 - **DO NOT** operate near the end of drop-offs or banks
 - **DO NOT** operate near the end of drop-offs or banks
 Operate up and down (not across) intermediate slopes. Avoid sudden starts and stops
- Pick the most level route when transporting across fields. Avoid the edges of ditches or gullies and steep hillsides
- Be extra careful when working on inclines
- Periodically clear the equipment of brush, twigs or other materials to prevent buildup of dry combustible materials
- Avoid overhead wires or other obstacles. Contact with overhead lines could cause serious injury or death
- Avoid loose fill, rocks and holes; they can be dangerous for equipment operation or movement
- Allow for unit length when making turns
- Do not walk or work under raised components or attachments unless securely positioned and blocked
- Keep all bystanders, pets and livestock clear of the work area
- As a precaution, always recheck the hardware on equipment following every 100 hours of operation. Correct all problems. Follow the maintenance safety procedures
- Operate the towing vehicle from the operator's seat only



FOLLOWING OPERATION:

- Following operation, or when unhooking, stop the towing vehicle, set the brakes, disengage the PTO and all power drives, shut off the engine and **remove the ignition keys**
- Store the unit in an area away from human activity
- Do not park equipment where it will be exposed to livestock for long periods. Damage and livestock injury could result
- Do not permit children to play on or around the stored unit

- Make sure all parked machines are on a hard, level surface and engage all safety devices
- Wheel chocks may be needed to prevent unit from rolling



HIGHWAY AND TRANSPORT OPERATIONS:

- Adopt safe driving practices:
 - Always drive at a safe speed relative to local conditions and ensure that your speed is low enough for an emergency to stop to be safe and secure. Keep speed to a minimum
 - Reduce speed prior to turns to avoid the risk of overturning
 - Avoid sudden uphill turns on steep slopes
 - Always keep the truck, or towing vehicle in gear to provide engine braking when going downhill. Do not coast
 - Do not drink and drive!**
- Comply with state and local laws governing highway safety and movement of farm machinery on public roads
- Use approved accessory lighting flags and necessary warning devices to protect operators of other vehicles on the highway, during daylight and nighttime transport, in accordance with State Department of Transportation specifications. Various safety lights and devices are available from your Dealer
- The use of flashing amber lights is acceptable in most localities. However, some localities prohibit their use. Local laws should be checked for all highway lighting and marking requirements
- Be a safe and courteous driver. Always yield to oncoming traffic in all situations, including narrow bridges, intersections, etc
- Be observant of bridge loading ratings. Do not cross bridges rated lower than the gross weight at which you are operating
- Watch for obstructions overhead and to the side while transporting
- Always operate equipment in a position to provide maximum visibility at all times. Make allowances for increased length and weight of the equipment when making turns, stopping the unit, etc



PERFORMING MAINTENANCE:

- Good maintenance is your responsibility. Poor maintenance is an invitation to trouble
- Make sure there is plenty of ventilation. Never operate the engine in a closed building. The exhaust fumes may cause asphyxiation
- Before working on this machine, stop, set the brakes, disengage the PTO and all power drives, shut off the engine and remove the ignition keys
- Be certain all moving parts on attachments have come to a complete stop before attempting to perform maintenance
- Always use a safety support and block the wheels. Never use a jack to support the machine
- Always use the proper tools or equipment for the job at hand
- Use extreme caution when making adjustments
- Follow the torque chart in this manual when tightening bolts and nuts
- Never use your hands to locate a hydraulic leak on attachments. Use a small piece of cardboard or wood. Hydraulic fluid escaping under pressure can penetrate the skin
- When disconnecting hydraulic lines, shut off hydraulic supply and relieve all hydraulic pressure
- Openings in the skin and minor cuts are susceptible to infection from hydraulic fluid. **If injured by escaping hydraulic fluid, see a doctor at once. Gangrene can result. Without immediate medical treatment, serious infection and reactions can occur**
- Replace **all shields and guards** after servicing and before moving
- After servicing, be sure all tools, parts and service equipment are removed
- Do not allow grease or oil to build up on any step or platform
- Never replace hex bolts with less than grade five bolts unless otherwise specified. Refer to bolt torque chart for head identification marking
- Where replacement parts are necessary for periodic maintenance and servicing, genuine factory replacement parts must be used to restore your equipment to original specifications. The manufacturer will not claim responsibility for use of unapproved parts and/or accessories and other damages as a result of their use
- If equipment has been altered in any way from original design, the manufacturer does not accept any liability for injury or warranty

- A fire extinguisher and first aid kit should be kept readily accessible while performing maintenance on this equipment

MAINTENANCE/SERVICE INFORMATION

Bearings

- Inspect bearings for wear and heat every 100 hours
- The Pillow Block and Flanged bearing units are factory pre-lubricated and, therefore, do not require supplemental grease before service life begins. Re-lubrication, when administered correctly, can increase the life of a bearing substantially. Bearing manufacturers recommend that all these bearings be greased daily to weekly, considering the environmental condition that these harvesters are exposed to. NOTE: Over lubrication is a major cause of bearing failures. Please re-lubricate conservatively. When selecting a bearing lubricant, use any lithium-based NLGI #2 grease



Always perform maintenance with machine stopped and engine shut off

Hydraulic Oil

- Inspect oil level every 20 hours
- Replace oil every season or sooner if conditions are extreme
- Dispose of oil in a responsible manner. Consult local authorities for disposal site
- Recommended hydraulic oil is Texaco Rando Superflow AZ or equivalent: *
 - *Chevron AW MV 32
 - *Mobil DTE 13M

Floor Chain Lubrication

- Chain should be cleaned and lubricated weekly
- Use generous amounts of oil.
- Allow machine to run five minutes after oil has been applied
- Re-tension chain at this time



Never enter machine while it is running

Chain Tension

Chain tension adjusters are at the front of the box, behind the truck cab

- Inspect chain for wear and tension weekly
- Tension chains to a deflection of 6-7" at center span
- Loose chains cause excessive wear and damage
- Chains that are too tight accelerate wear



Never enter machine while it is running

Seasonal Storage

- Perform all service recommended in the Maintenance Schedule

- o Lubricate chains
- o Inspect box for wear and damage
- o Keep dry during storage

LUBRICATION & SERVICE SCHEDULE

	Every 20 Hrs		Every 100 hrs		Seasonal	
	O	X			O	X
Floor Chain	O	X			O	X
Drive Chain			O	X	O	X
Bearings			O	X	O	X
All Bolts & Fasteners				X		X
Frame						X
Wheel Nuts		X				X
Hydraulic Fluid		X			O	
Hydraulic Cylinders				X		X
Lights & Wires		X				X
Hydraulic Lines						X
Guards		X				X
Rear Doors		X				X

O = Service and lubricate as recommended

X = Inspect for wear or damage

NOTE: Service and lubrication does not apply to truck – Application to Trailer only



Factory recommends that ALL BOLTS AND FASTENERS BE RE-TORQUED AFTER THE FIRST 20 HOURS OF USE



AVOID INJURY: Never service machine while running. Follow safety procedures in this manual for service and maintenance

TROUBLE SHOOTING

<u>Problem</u>	<u>Possible Cause</u>	<u>Possible Solution</u>
Floor not moving	<ol style="list-style-type: none"> 1. Oil line punctured 2. Load too heavy 3. Pump relief valve malfunction 4. Control valve malfunction 5. Hydraulic motor stall, or malfunction 6. Hydraulic pump malfunction 7. Chain frozen down 	<ol style="list-style-type: none"> 1. Replace broken hose 2. Reduce load size 3. Adjust relief valve to 3500-PSI maximum, replace valve, replace pump 4. Contact local Dealer, replace valve 5. Replace motor, replace pump 6. Call local Dealer, replace pump 7. Allow machine to warm up
Rear doors won't close	<ol style="list-style-type: none"> 1. Hydraulic lines leak 2. Electric controls disconnected or shorted 3. Frozen down 4. Relief valve malfunction 5. Hydraulic pump unit malfunction 6. Control valve malfunction 	<ol style="list-style-type: none"> 1. Inspect and replace broken hose 2. Inspect and replace faulty wires or switch 3. Allow machine to warm up 4. Adjust relief valve to 400-PSI maximum, replace relief valve 5. Replace relief valve, replace pump 6. Contact local Dealer, replace valve

BOLT TORQUE

Checking Bolt Torque

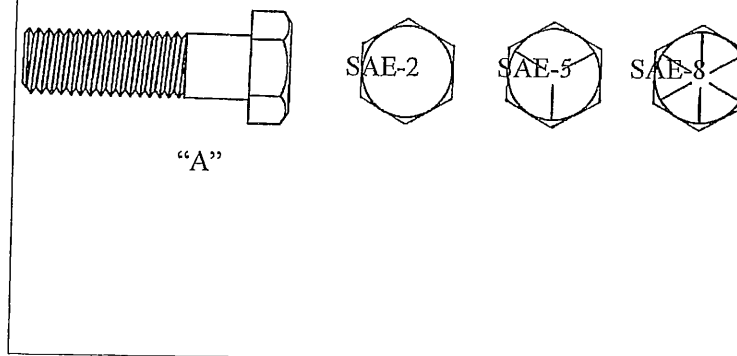
The table shown below gives correct torque values for various bolts and cap screws. Tighten all bolts to the torques specified in the chart unless otherwise noted. Check tightness of bolts periodically, using bolt torque chart as a guide. Replace hardware with the same strength bolt

Torque specifications

Bolt Size	SAE 2	SAE 5	SAE 8
"A"	Torque lb/ft	Torque lb/ft	Torque lb/ft
1/4	6	9	12
5/16	10	19	27
3/8	20	33	45
7/16	30	53	75
1/2	45	80	115
9/16	70	115	15
5/8	95	160	220
3/4	165	290	400
7/8	170	410	650
1	225	630	970

Torque figures indicated above are valid for non-greased or non-oiled threads and heads unless otherwise specified. Therefore, do not grease or oil bolts or cap screws unless otherwise specified in this manual. When using locking elements, increase torque values by 5%

- Torque value for bolts and cap screws are identified by their head markings



STARTUP PROCEDURE

1. Engage PTO and set motor to idle. Be sure rear doors are open before engaging the PTO (to first verify that the floor chains are running in the right direction)
2. Watch floor chains for smooth operation
3. Watch floor drive chains for smooth operation
4. After a twenty-minute break-in period, check all chains
 - Note: New chains need to “set in” and require frequent re-tensioning
5. Replace all guards and covers.
 - Never operate the machine without guards and covers in place
6. Shut off machine before performing any adjustments or lubrication



AVOID SERIOUS INJURY – DO NOT ENTER BOX WHEN INITIAL START UP IN PROCESS
OR WHILE FLOOR CHAIN IS MOVING

PARMA[®]

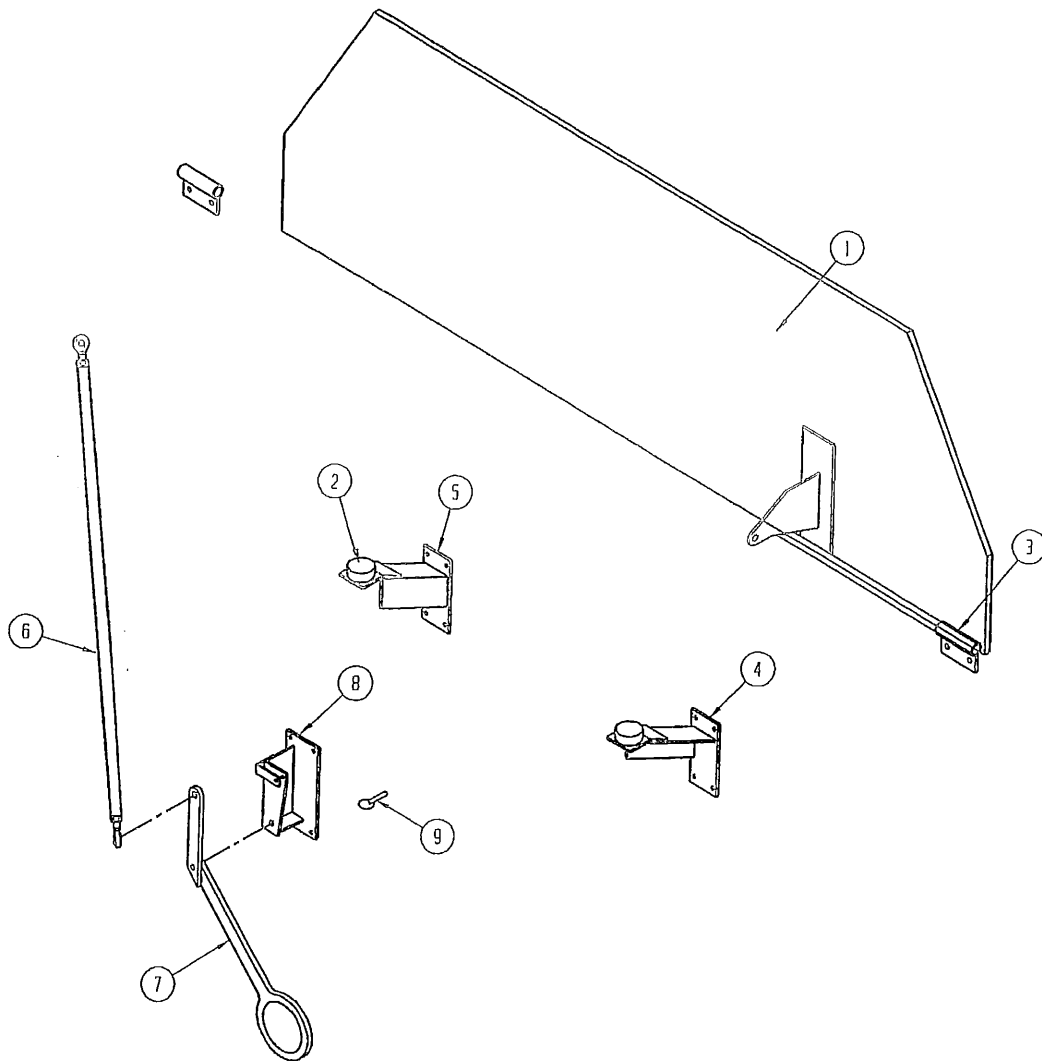
Forage
Trailer
PARTS SECTION



TABLE OF CONTENTS

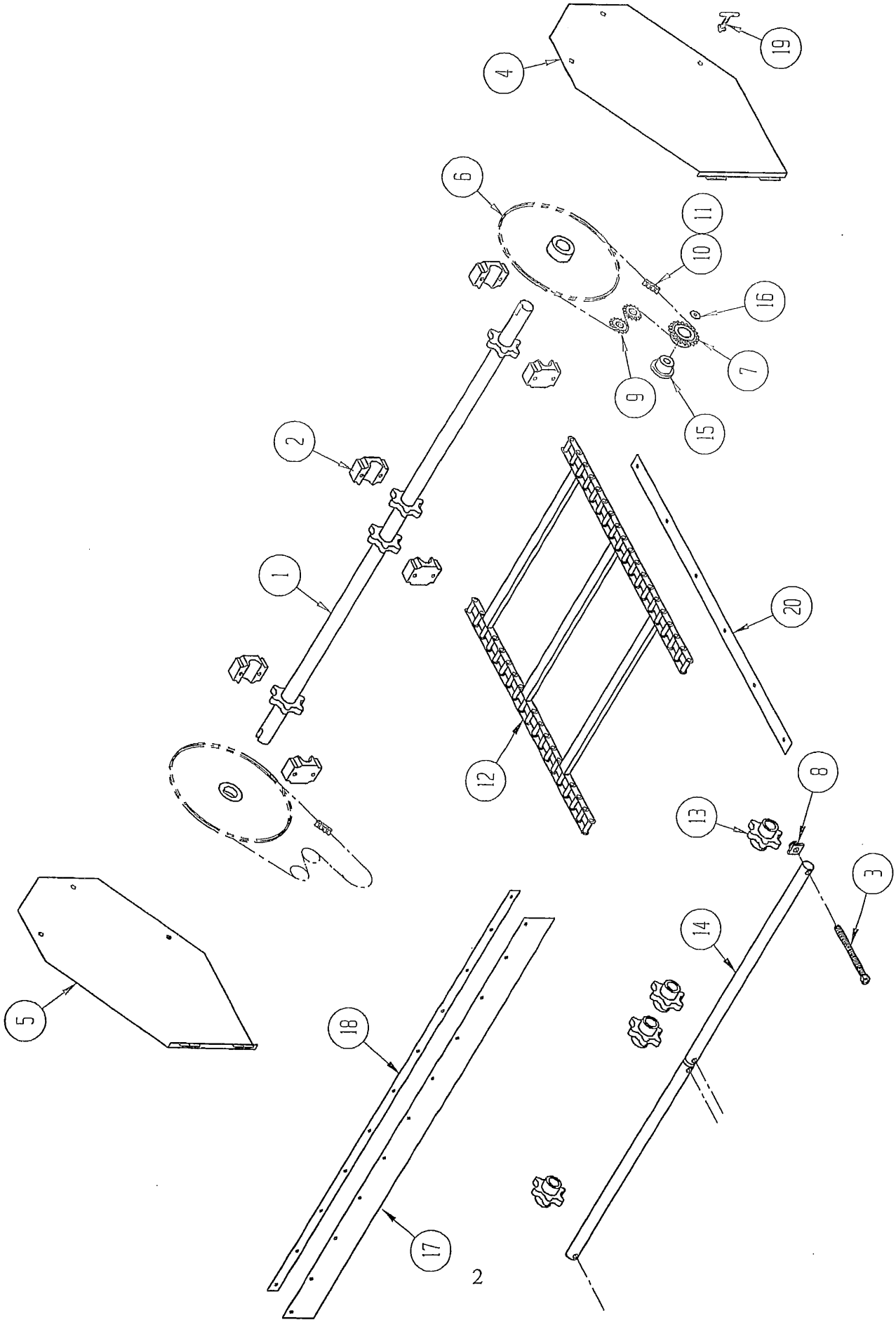
AIR CLOSER.....	10
BLOWOVER.....	14
DECAL GROUP.....	13
ELECTRIC CONTROLS	7
FOLD DOWN DOOR ASSEMBLY	1
FLOOR CHAIN DRIVE ASSEMBLY.....	3
HYDRAULIC COMPONENTS.....	5
HYDRAULIC DOOR CLOSER.....	11
REAR DOOR ASSEMBLY.....	9
SWITCH BOX ASSEMBLY	8





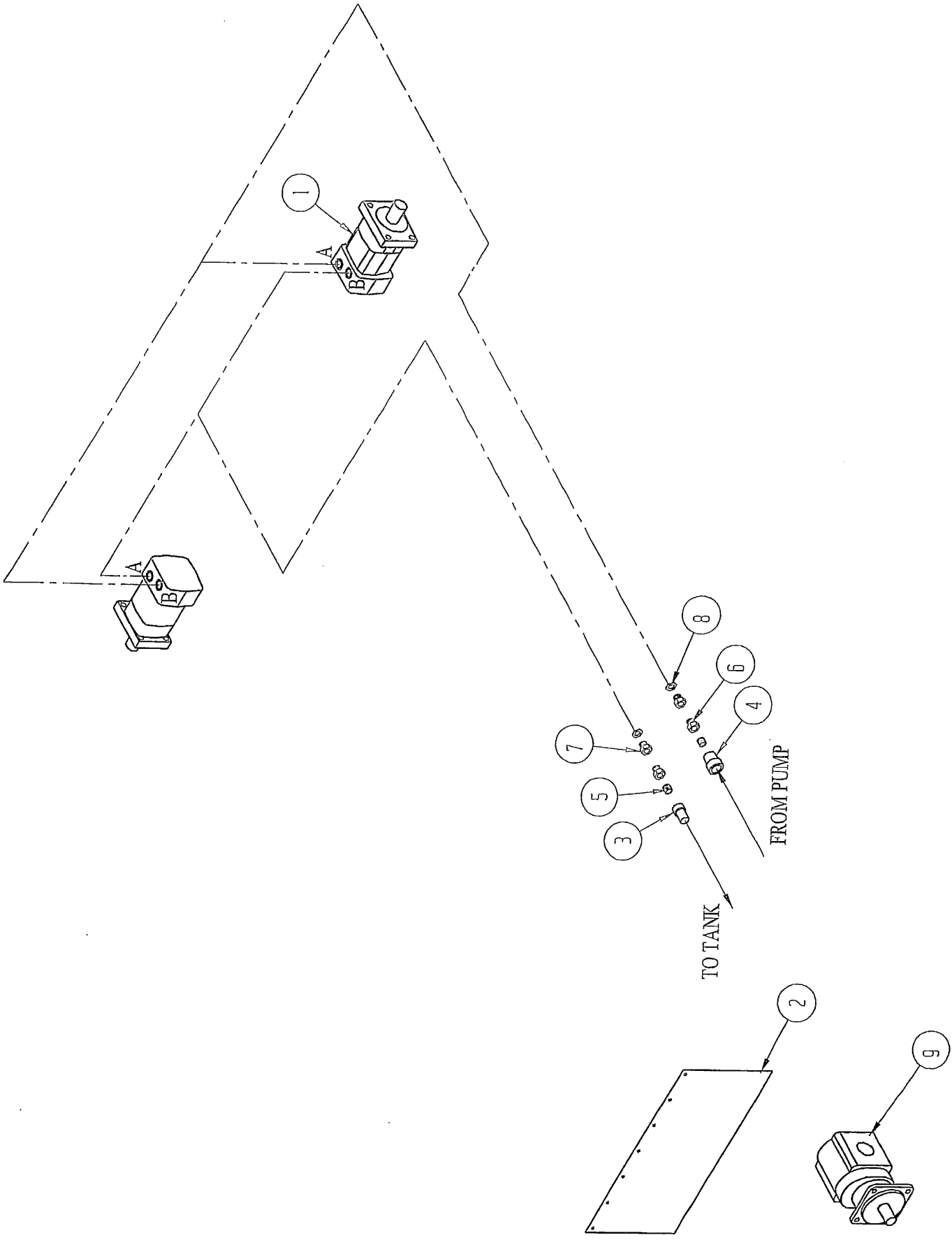
FOLD DOWN DOOR ASSEMBLY

ITEM NO.	QUANTITY	PART NO.	DESCRIPTION
1	1	720528	Front Door Panel
2	2	700280	Bumper
3	2	720090	Door Pivot
4	1	720093	LH Door Stop
5	1	720094	RH Door Stop
6	1	720099	Tie Rod Assembly
7	1	720060	Door Handle
8	1	720085	Handle Support
9	1	530053	Lynch Pin, 3/8 x 1 1/4



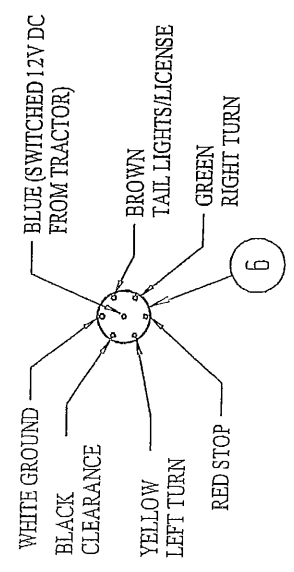
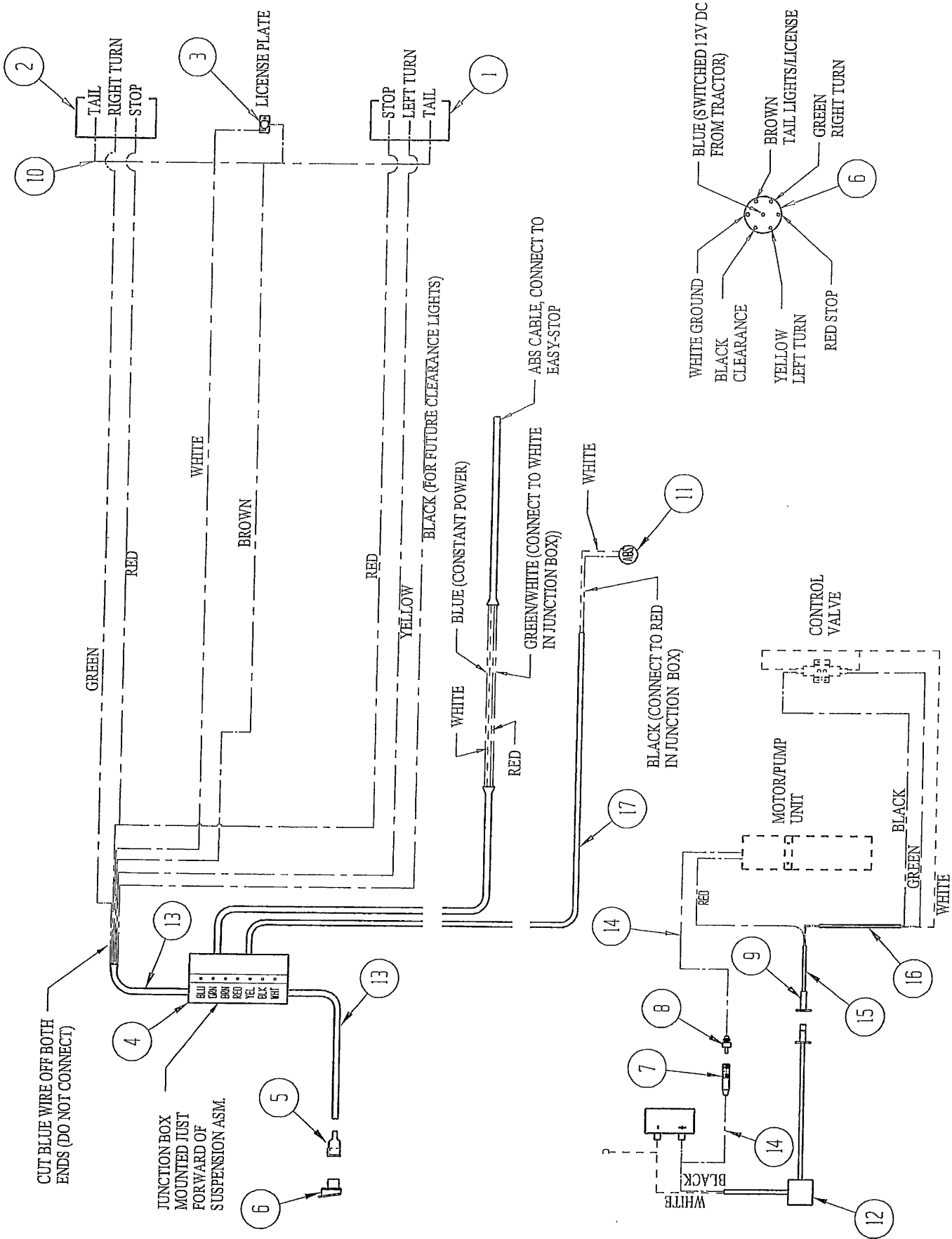
FLOOR CHAIN DRIVE ASSEMBLY

ITEM NO.	QUANTITY	PART NO.	DESCRIPTION
1	1	720057	Floor Shaft
2	3	700397	Floor Drive Bearing
3	4	720054	Adjusting Bolt
4	1	720065	LH Drive Door
5	1	720066	RH Drive Door
6	2	720249	Sprocket, 80C 70 Tooth
7	2	720755	Sprocket, P1, No. 80 11 Tooth
	2	720546	Sprocket, P1, No. 80 13 Tooth
8	4	700129	Tensioner Nut
9	4	980751	Idler Sprocket, RC80 12 Tooth
10	2	980912	Roller Chain, RC 80 110 Pitches
11	2	980927	Master Link, RC80
12	12	720055	Floor Chain Sectio, 30'
	14	720055	Floor Chain Section, 34'
	15	720055	Floor Chain Section, 36'
	16	720055	Floor Chain Section, 40'
13	4	700246	Idler Sprocket, 1 15/16 Bore
14	2	720053	Front Idler Shaft
15	2	720545	Bushing, P1(1 1/2" Bore)
16	2	-----	Fender Washer, 3/8
17	1	720036	Slope Panel Seal
18	1	720037	Slope Seal Bar
19	1	700398	Latch Key
20	4	720125	Chain Runner



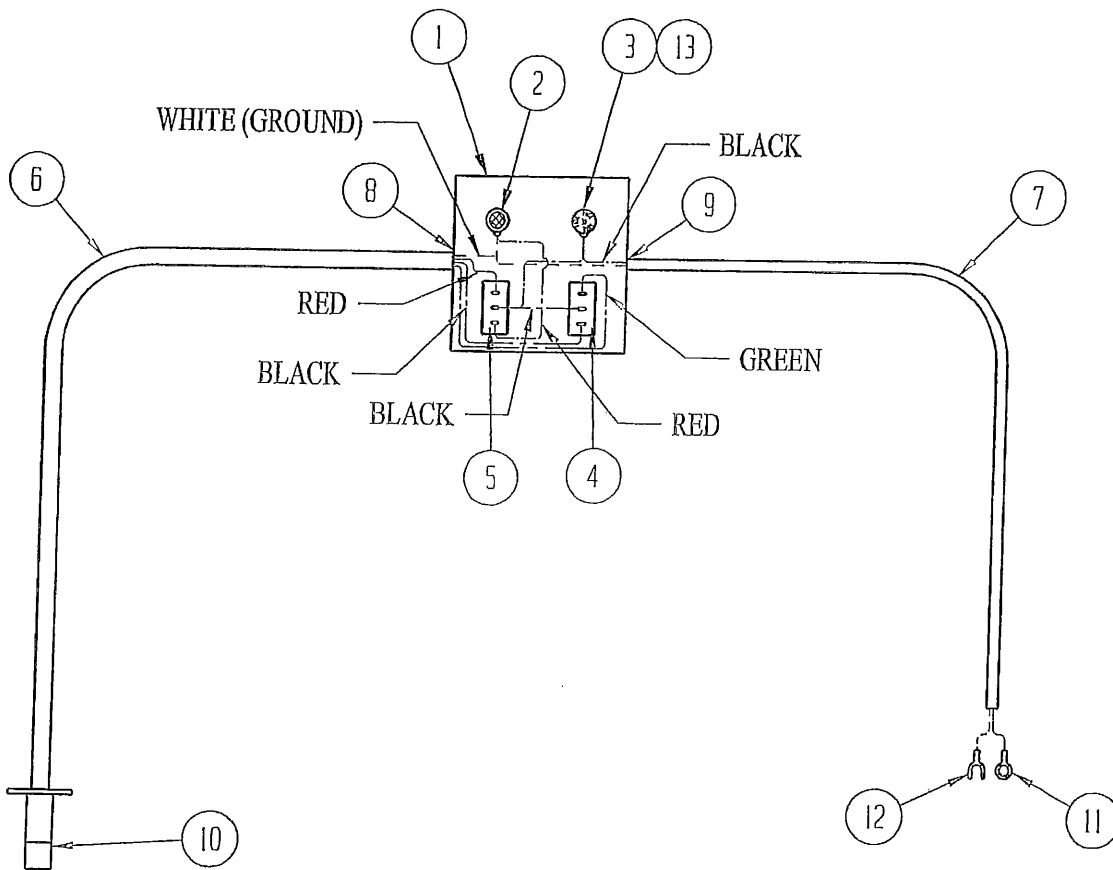
HYDRAULIC COMPONENTS

ITEM NO.	QUANTITY	PART NO.	DESCRIPTION
1	2	720543	Hydraulic Motor
2	1	720262	Pump Unit Flap
3	2	H8-63	Quick Coupler, Male
4	2	H8-62	Quick Coupler, Female
5	2	-----	Pipe Nipple, 1" NPT
6	2	0201-16-12	Reducing Adapter
7	2	0253-12-12	Bulkhead Fitting
8	2	53N-12	Lock Nut
9	1	720445	Hydraulic Pump (Optional for Wet Kit)



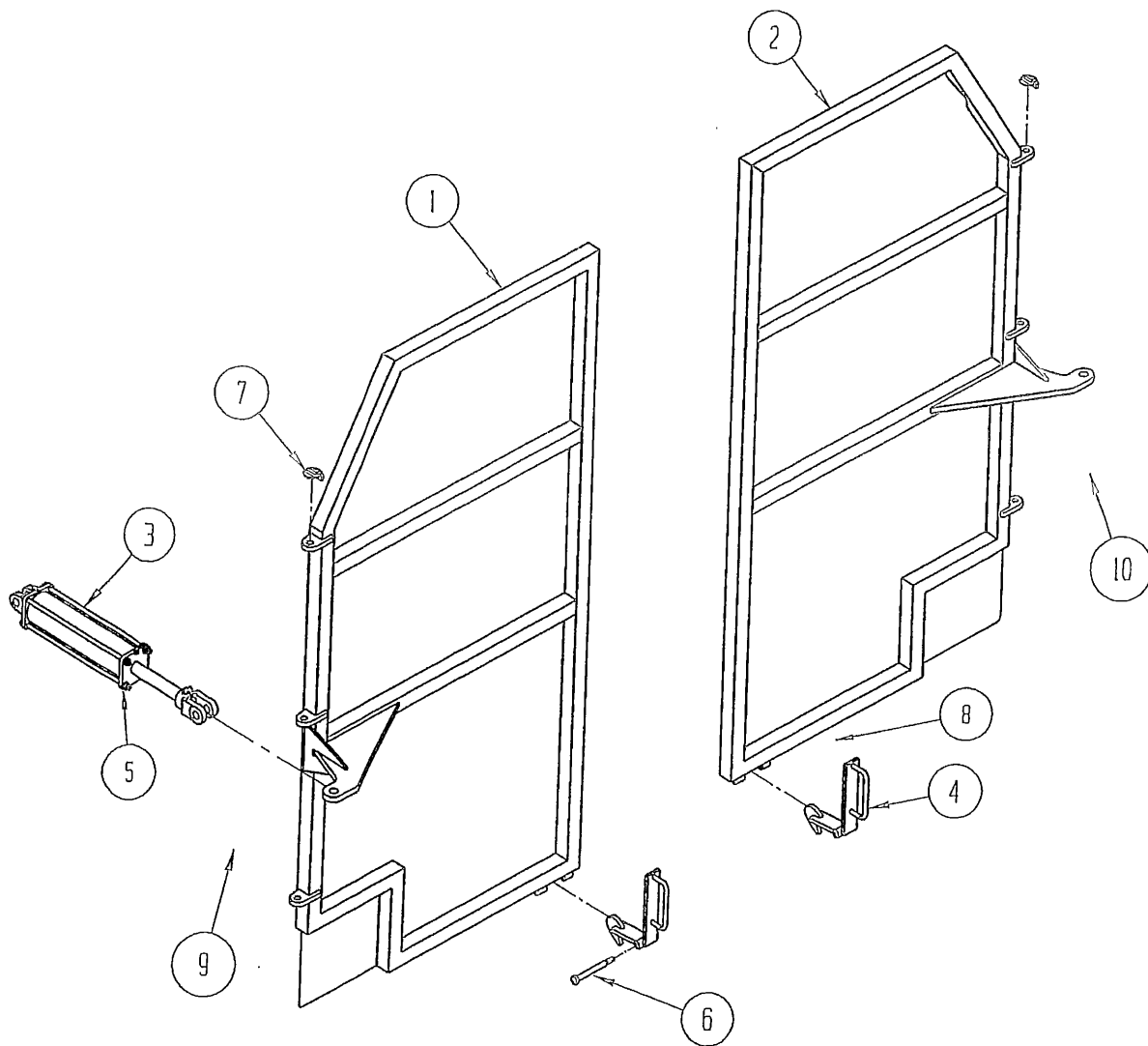
ELECTRICAL CONTROLS

ITEM NO.	QUANTITY	PART NO.	DESCRIPTION
1	1	720174	LH Tail Light
2	1	720175	RH Tail Light
3	1	720176	License Plate Light
4	1	720187	Junction Box
5	1	720252	Rubber Boot
6	1	720188	Plug, 7 Wire Female
7	1	720354	Cable Socket
8	1	720353	Male Connector
9	1	720258	Receptacle, 4 Wire
10	2	720370	Connector Assembly
11	1	720171	Warning Light, ABS
12	1	720259	Switch Box Assembly (See Page 8)
13	As Req'd	720376	Cable, 7 Wire
14	As Req'd	720260	Cable, #2 Wire
15	As Req'd	720261	Cable, 16-4 Wire - Type SJ
16	As Req'd	999358	Cable, 16-3 Wire - Type SJ
17	As Req'd	999174	Cable, 16-2 Wire - Type SJ



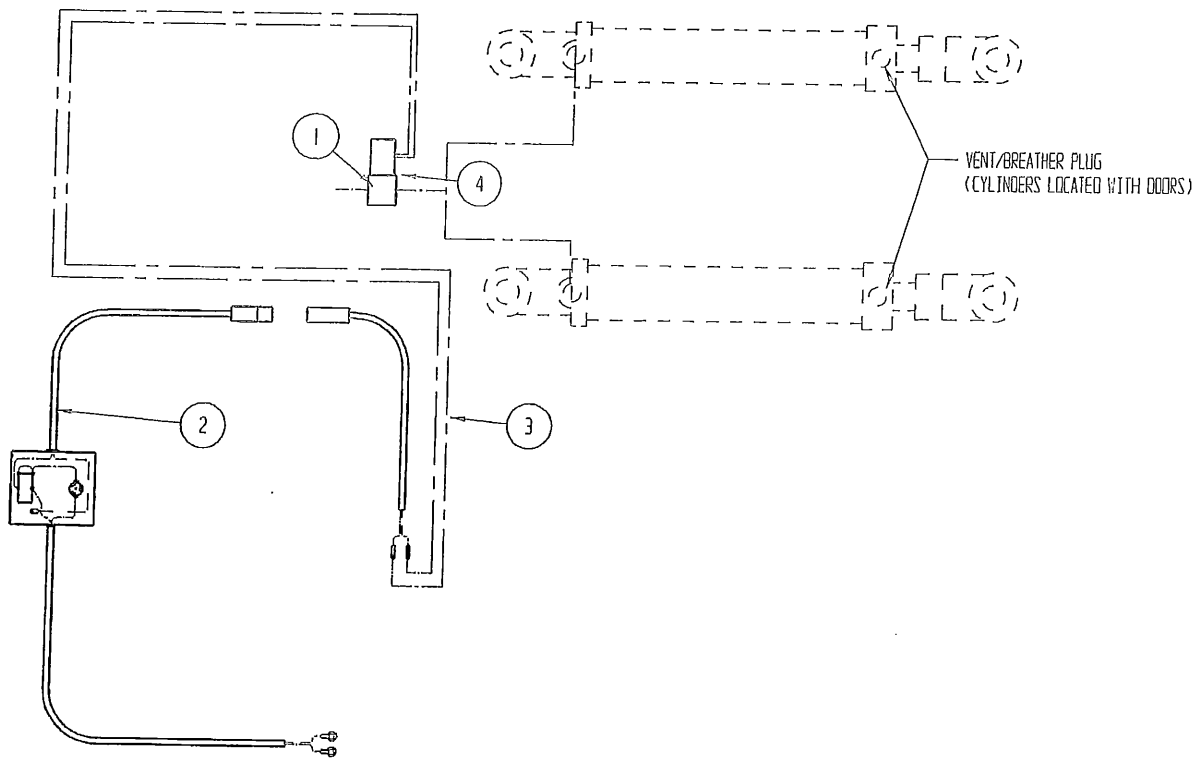
SWITCH BOX ASSEMBLY

ITEM NO.	QUANTITY	PART NO.	DESCRIPTION
1	1	720374	Electrical Box
2	1	100148	Light
3	1	999146	Fuse Holder
4	1	290564	Momentary Switch
5	1	999145	On/Off Switch
6	16'	720261	Cable, 16-4 Wire - Type SJ
7	8'	999318	Cable, 14-2 Wire - Type SJ
8	1	-----	Connector, Strain Relief (4 Wire)
9	1	-----	Connector, Strain Relief (2 Wire)
10	1	720257	Male Plug, 4 Wire
11	1	-----	Terminal, 14 Ga. Ring
12	1	-----	Terminal, 14 Ga. Spade
13	1	999272	Fuse, 30 Amp



REAR DOOR ASSEMBLY

ITEM NO.	QUANTITY	PART NO.	DESCRIPTION
1	1	720503	LH Rear Door
2	1	720504	RH Rear Door
3	2	720157	Hydraulic Cylinder 2 x 10
4	2	720119	Door Handle
5	2	720649	Breather
6	2	-----	Hex Bolt, 1/2 x 6 w/ Lock Nut
7	4	530053	Lynch Pin, 3/8"
8	2	720507	Spring
9	1	720634	Bracket, Door-Bolt On LH(not shown)
10	1	720635	Bracket, Door-Bolt On RH(not shown)

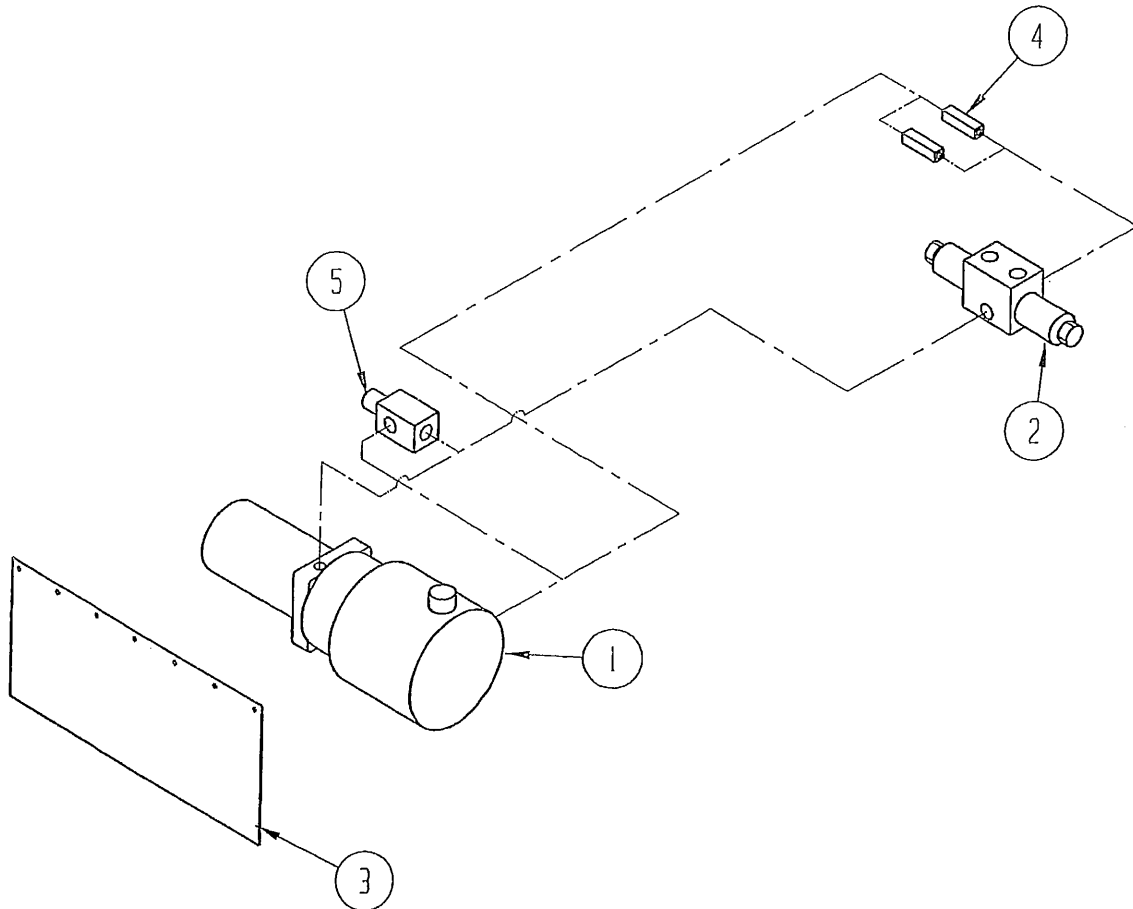


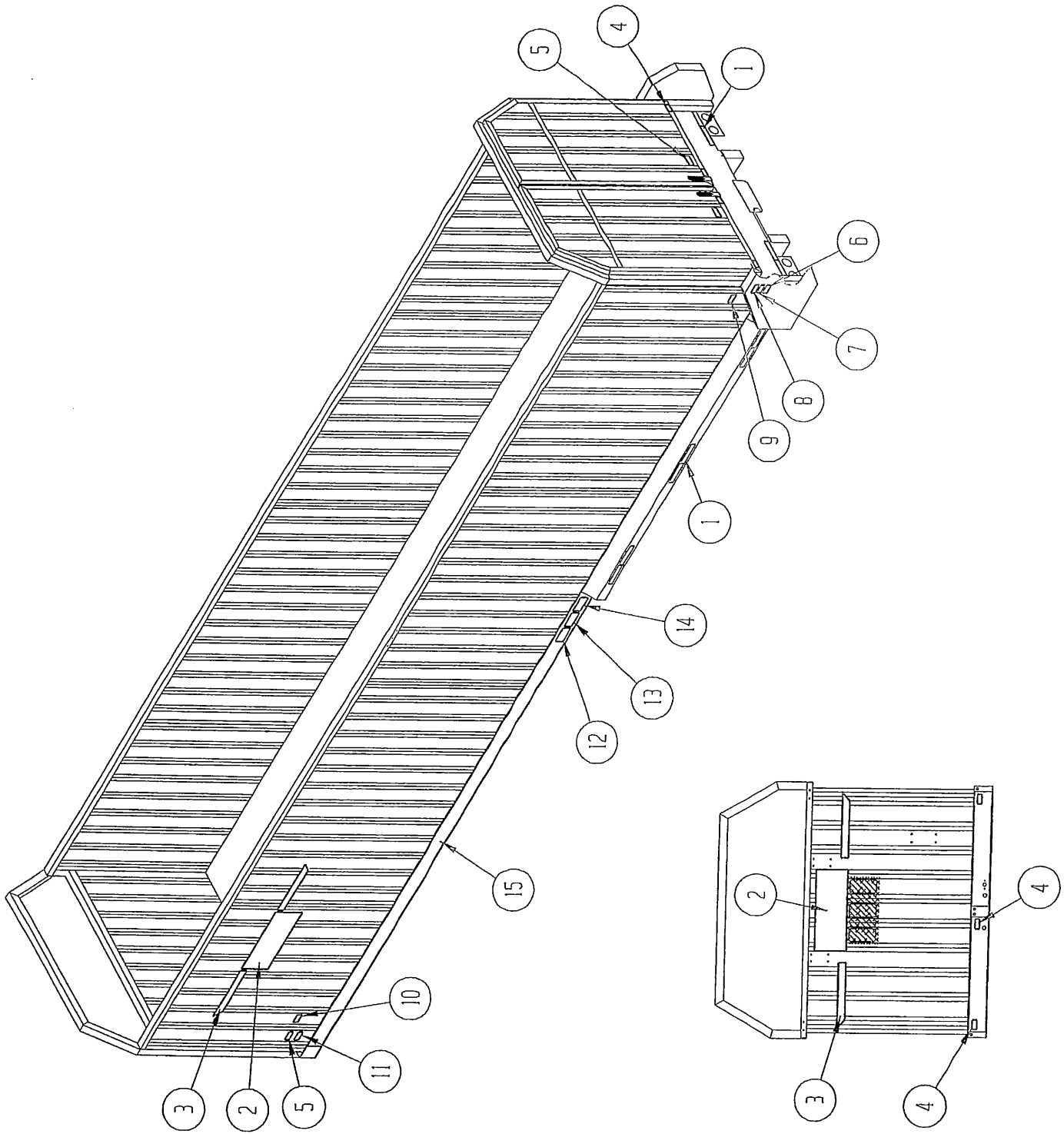
AIR CLOSER

ITEM No.	QUANTITY	PART No.	DESCRIPTION
1	1	720648	Air Closer Valve
2	1	720682	Box Assembly, Control
3	15'	999274	Wire, 16/2 Type SJ
4	1	999117	Pressure Relief Vent

HYDRAULIC DOOR CLOSER COMPONENTS

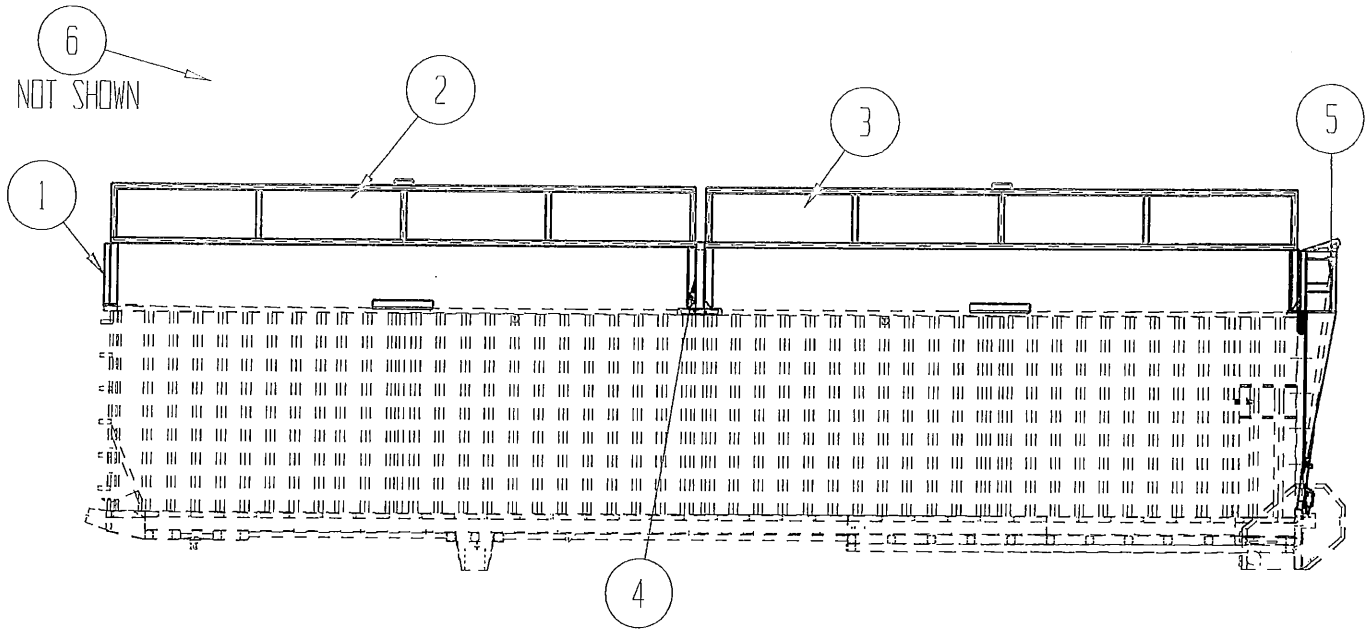
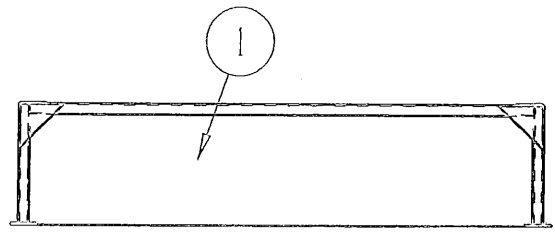
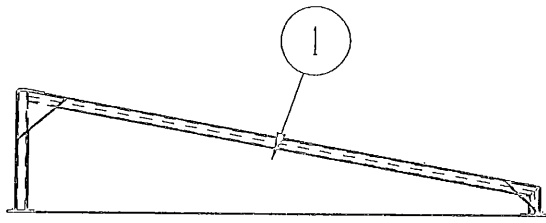
ITEM NO.	QUANTITY	PART NO.	DESCRIPTION
1	1	720158	Pump/Motor Unit(Optional)
2	1	720159	Control Valve Assembly (Optional)
	1	720446	Control Valve(Optional)
	1	720447	Sub-Plate(Optional)
	1	720448	Bolt Kit(Optional)
3	1	720262	Pump Unit Flap
4	2	720165	Check Valve(Doors)(Optional)
5	1	720160	Relief Valve Assembly (Doors)(Optional)
	1	720443	Relief Valve Cartridge(Doors)(Optional)
	1	720444	Relief Valve Body(Doors)(Optional)





DECAL GROUP

ITEM NO.	QUANTITY	PART NO.	DESCRIPTION
1	8	700495	Reflective Tape, 2 x 22"
2	3	720167	Decal, Parma
3	6	700499	Decal, Stripe
4	7	700497	Decal, Grease Gun
5	4	700493	Decal, Do Not Enter
6	2	700492	Decal, Lubricate
7	2	700500	Decal, Turn Engine Off
8	2	700498	Decal, Chain Lube
9	2	700502	Decal, Replace Shields
10	2	700489	Decal, Adjust Chains
11	2	700491	Decal, Grease Entire Machine
12	1	720191	Decal, Warning Failure To Lock
13	1	720192	Decal, Warning Torque
14	1	720193	Decal, E-Z Puller
15	2	700563	Decal, Yellow Strip - 231"



BLOW OVER GROUP

ITEM NO.	QUANTITY	PART NO.	DESCRIPTION
1	1	720968	Front Brace 2-0 Blowover
		721207	Front Brace 2-2 Blowover
2	1	720963.34	Front Panel, 34'
	1	720963	Front Panel, 36'
3	1	720965.34	Rear Panel, 34'
	1	720965	Rear Panel, 36'
4	1	720967	Center Brace 2-0
	1	721205	Center Brace 2-2
5	1	721356	Rear Gate Swing/Leanout
6	1	721484	Tarp Kit, 34'

NOTES

